

VERTI MADERA



PARTITIONS WITH WOODEN FRAMES

The most striking element of the VERTI MADERA partition is the wooden profile, which gives your interior a cosy feeling. Office spaces often feel sterile and cold, whereas wood can add an unexpected – and much needed – touch of nature. A big advantage is the wide variability. You can choose a single or double glazed variant of the partition set in solid wood.





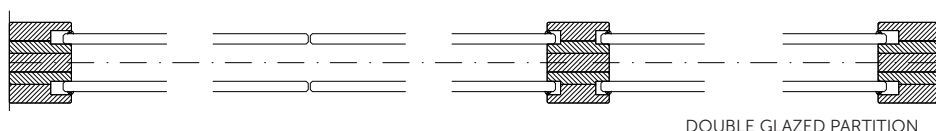
TECHNICAL PARAMETERS

Description and use	Non-load-bearing interior partition
Partition thickness	40–100 mm
Default module width	1000 mm
Default module height	3000 mm
Module connection method	Double-sided transparent adhesive tape
Connection to surrounding structures	Installation into existing ceiling / ceiling construction (mineral/SDK) / floor/wall
Surface finish	Solid oak wood / wood veneer
Parameters of glazed panels	Tempered / glued glass with polished / sanded edge
Default door leaf size	800 × 2100 mm
Glass thickness	10–12 mm
Door hinges and forging	Depending on door type and customer requirements
Types of doors and door panels	Wood / glass
Air soundproofing	Glass partitions up to 46 dB Wooden doors up to 23–38 dB All-glass doors up to 32 dB

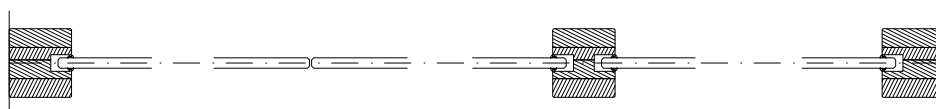
SYSTEM DETAIL



SAMPLE FLOOR PLAN



DOUBLE GLAZED PARTITION



SINGLE GLAZED PARTITION

